

AS3X+ MENU STRUCTURE

Introduction

The following pages outline the Forward Programming (FP) menu structure for AS3X+ as of the version number noted in the header on each page. Also included are examples of menu structures for locked BNF Rxs on both AS3X and AS3X+.

The overall goal of this document is to visually present the overall menu structure with the intent of making it easier for someone using FP to locate a particular setting or adjustment. It is not intended to provide a comprehensive guide regarding how to set up/use Forward Programming or to set up AS3X+ and SAFE. As such, not every “keystroke” is listed although some detail is provided where it might be easy for someone unfamiliar to get confused.

Spektrum’s [Wiki](#) is the official resource for the above. Predating Spektrum’s Wiki however, flightengr’s [blog](#) on RCGroups is also a go-to resource due to the many great write ups that explain things in an easy-to-understand manner and provide step-by-step instructions/examples.

The text in the menus below tries to mimic the on-screen text from Spektrum but it is possible there may be some minor variations (i.e., “mistakes!”) as there is a ton of very small print. It should be close enough to be recognizable/get you to where you want to go however.

In addition to the above resources, as you go through the FP process, be sure to read, understand, and utilize the on-screen instructions, notes, and prompts, as well as your common sense. I recommend familiarizing yourself with the (multiple) ways to save a backup of your file (i.e., on the Rx itself as well as on your computer) and making sure you do that. Doing so gives you the ability to “Factory Reset” and start over as many times as you want/need to teach yourself without fear of losing everything.

Finally, note that no Forward Programming (FP) menus are available until you have an FP capable receiver bound to your transmitter, and your transmitter and receiver are both on.

TABLE OF CONTENTS

Page 1 - Introduction

Page 2 - Overall FP menu Options for Open Stock/Factory Reset Rx before First Time Setup is completed

After First Time Setup is completed:

Page 3 - Overall FP menu options

Page 4 - AS3X menu options

Page 5 - SAFE Settings menu options

Page 6 - F-Mode Setup menu options

Page 7 - System Setup menu options

Page 8 - Nosewheel menu options

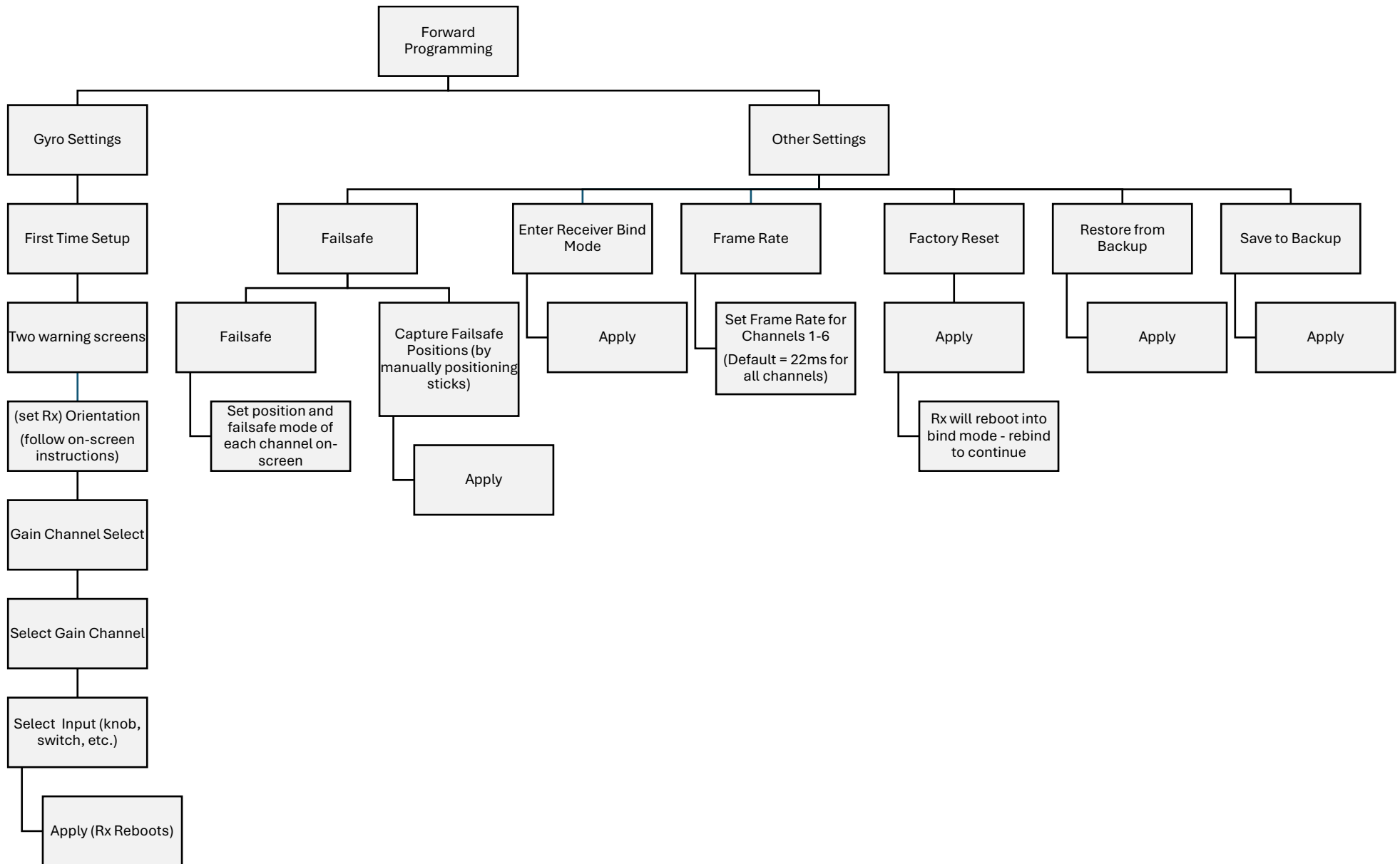
Menu options for Locked Rxs:

Page 9 - Overall FP menu options for a locked, SAFE Select, BNF Rx on AS3X Firmware 2.XX.XX

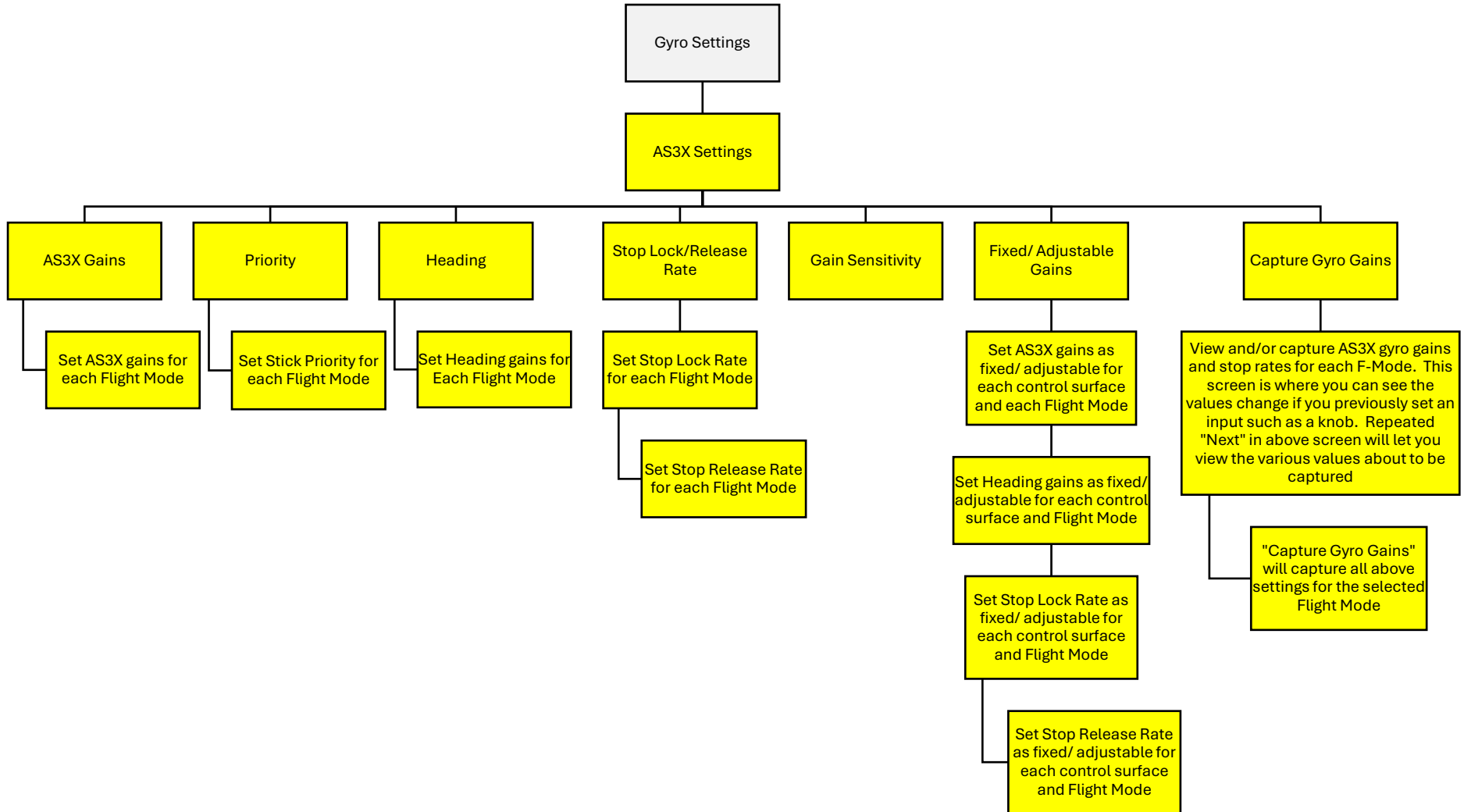
Page 10 - Overall FP menu options for a locked, SAFE Select, BNF Rx on AS3X+ Firmware 3.XX.XX

Page 11 - Overall FP menu options for a locked, 3-Mode, BNF Rx (e.g. a trainer aircraft)

FORWARD PROGRAMMING options if Rx is open stock or has just been factory reset and First Time Setup has not been completed



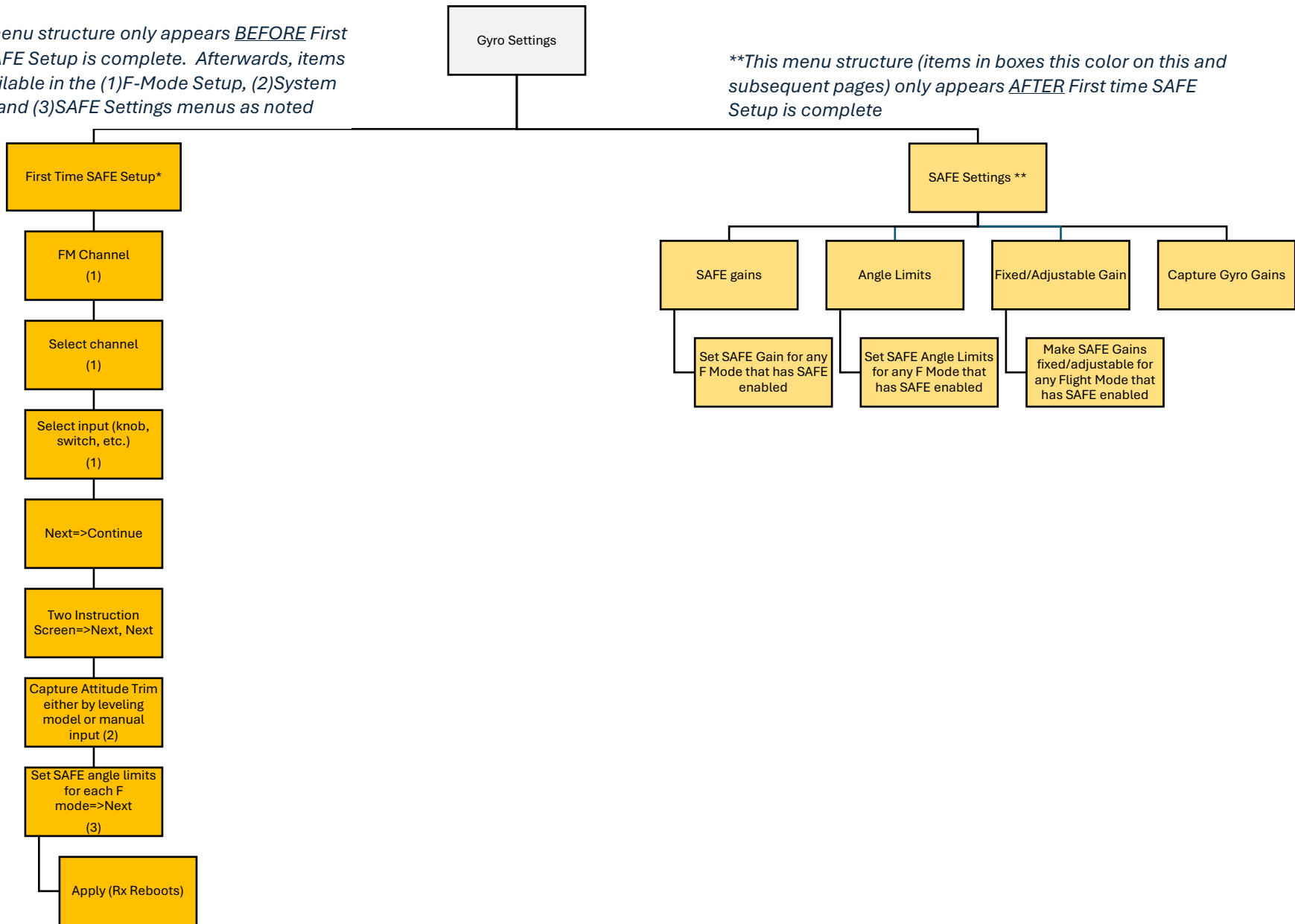
AS3X+ Forward Programming Menu Structure (AS3X+ Firmware v3.01.03, July 18,2024)
AS3X SETTINGS options after First Time Setup is completed



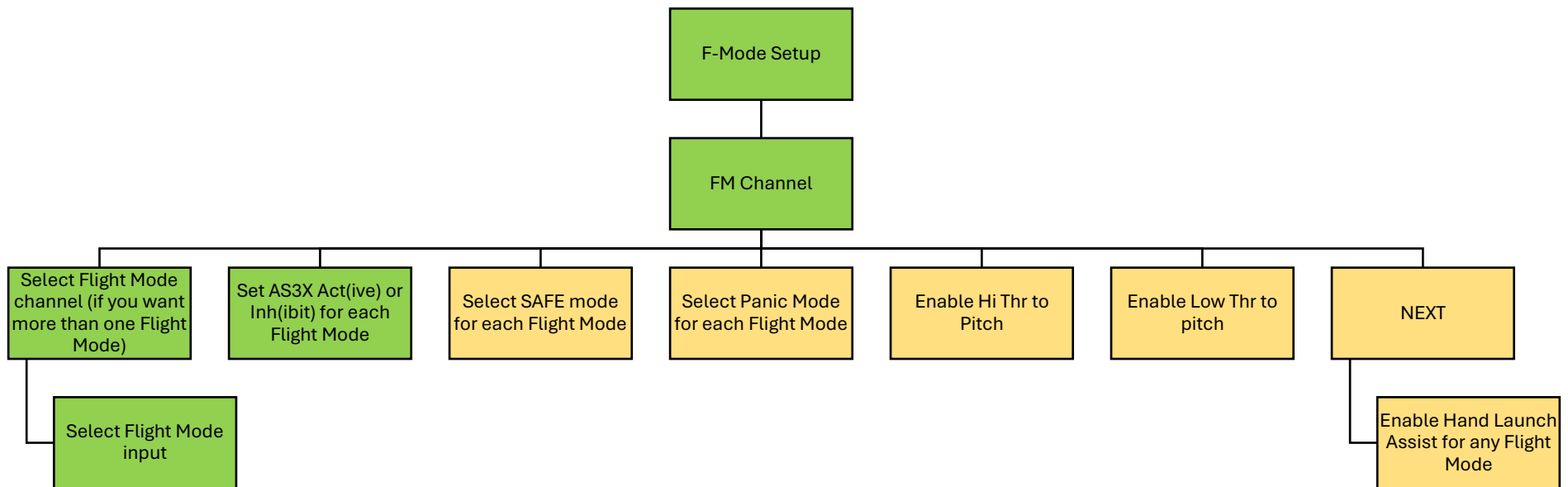
AS3X+ Forward Programming Menu Structure (AS3X+ Firmware v3.01.03, July 18,2024)
SAFE Settings options after First Time Setup is completed

**This menu structure only appears BEFORE First time SAFE Setup is complete. Afterwards, items are available in the (1)F-Mode Setup, (2)System Setup, and (3)SAFE Settings menus as noted*

***This menu structure (items in boxes this color on this and subsequent pages) only appears AFTER First time SAFE Setup is complete*

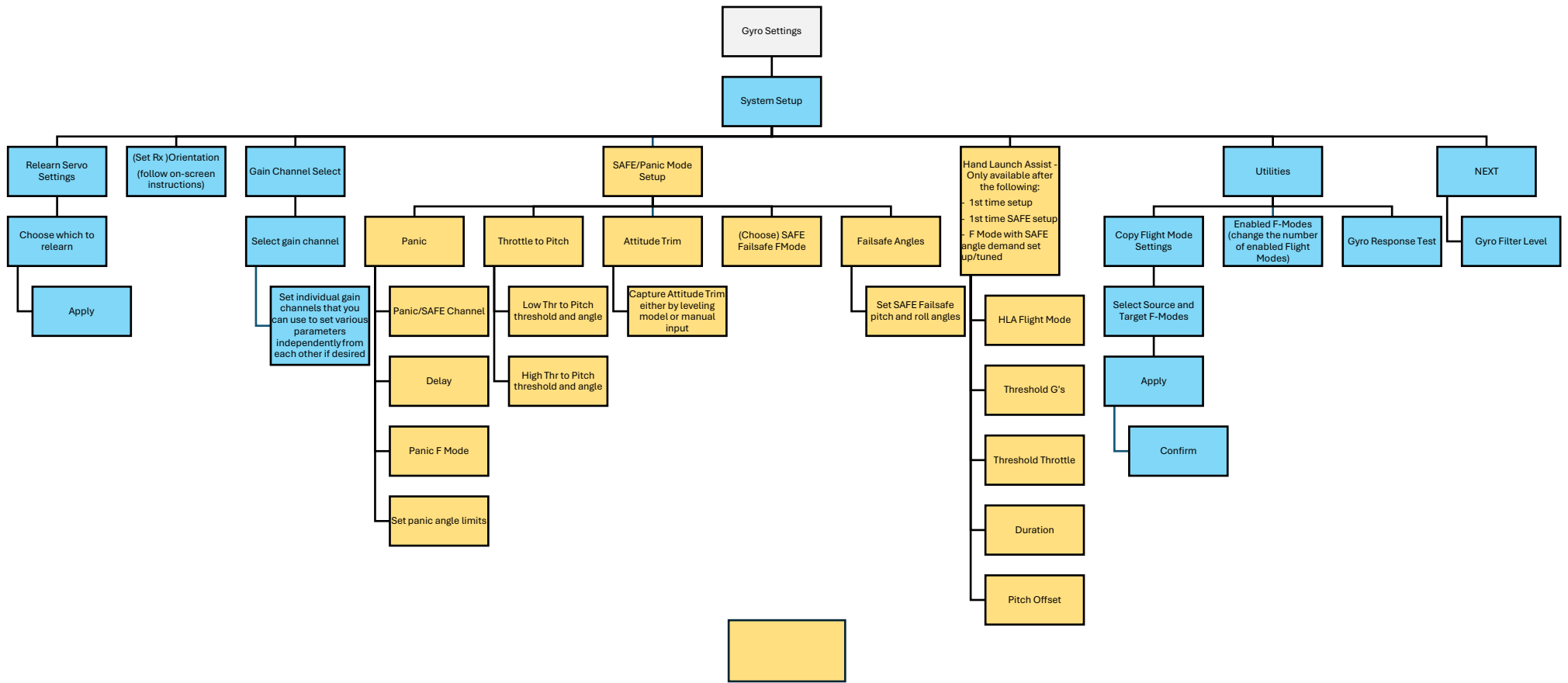


AS3X+ Forward Programming Menu Structure (AS3X+ Firmware v3.01.03, July 18,2024)
F-MODE SETUP options after First Time Setup is completed



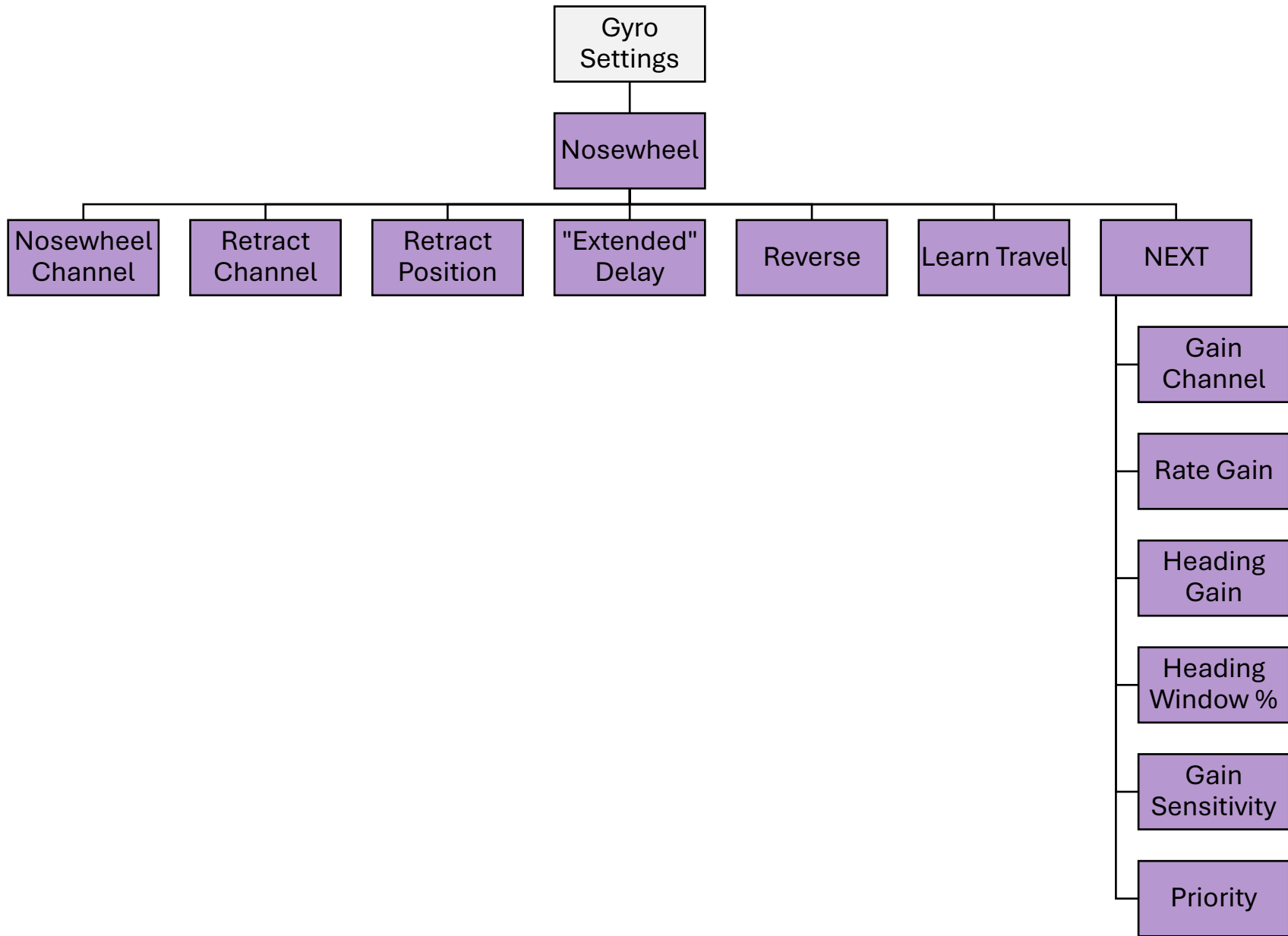
Menu items in boxes this color appear only
AFTER First Time SAFE Setup is complete

AS3X+ Forward Programming Menu Structure (AS3X+ Firmware v3.01.03, July 18,2024)
SYSTEM SETUP options after First Time Setup is completed

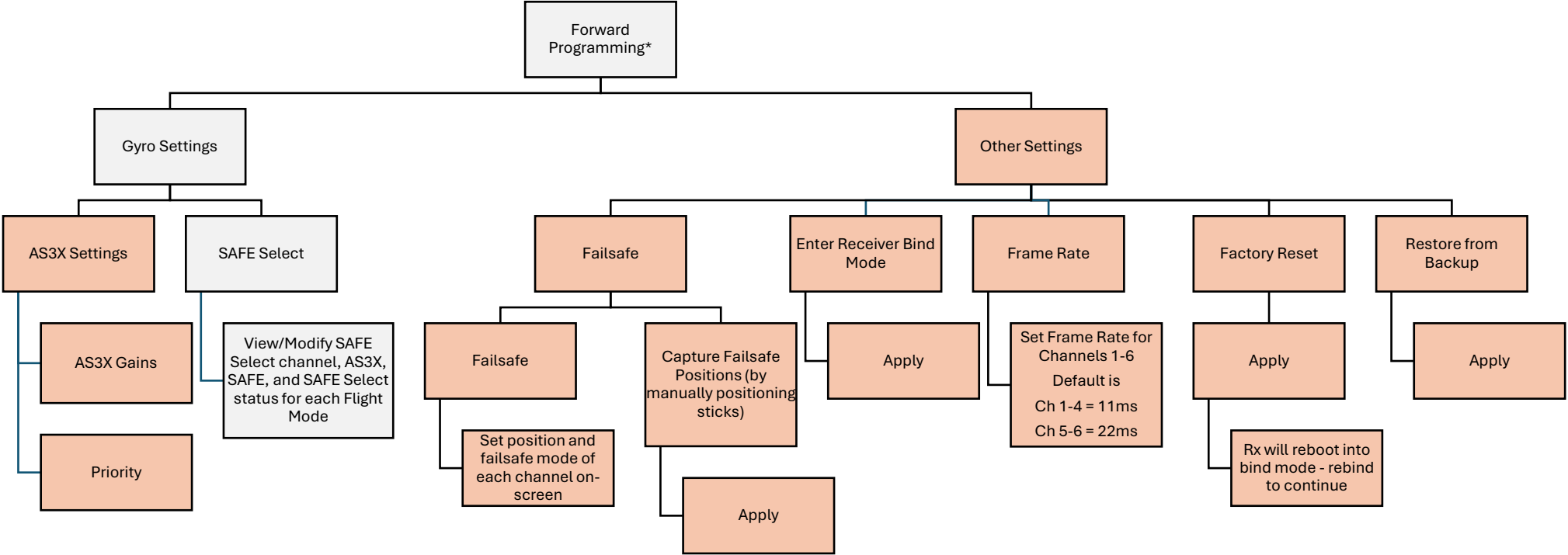


Menu items in boxes this color appear only
 AFTER First Time SAFE Setup is complete

NOSEWHEEL options after First Time Setup is completed



**AS3X Forward Programming Menu Structure for a locked, SAFE Select, BNF Rx
(E-Flite Eratix BNF with a locked AR630 on AS3X Firmware v2.48.00 (January 16 ,2024))**

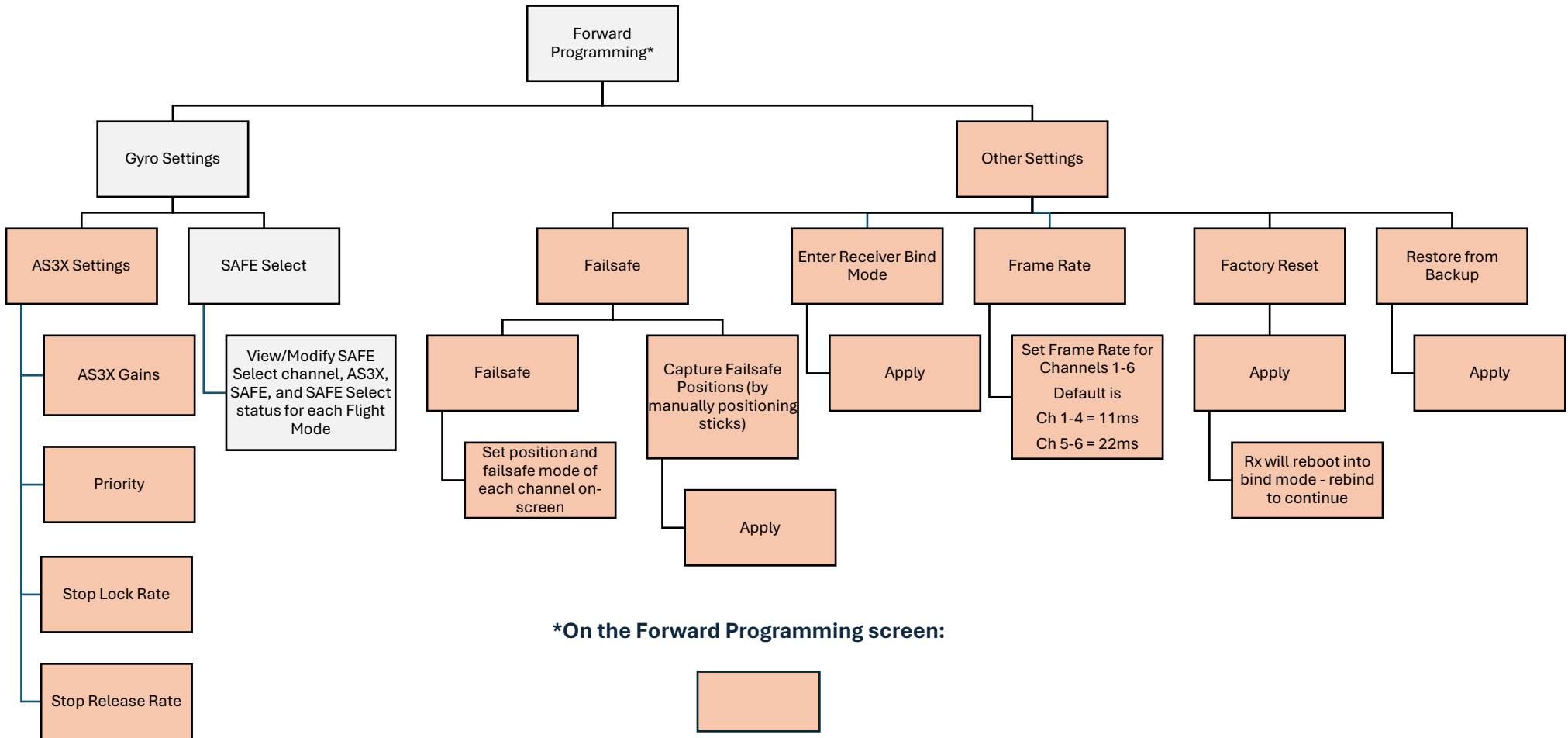


***On the Forward Programming screen:**



*Submenu items in boxes this color only appear if "Show Advanced Menus" is **Active**. If "Show Advanced Menus" is **Inhibited** only the gray items appear.*

**AS3X Forward Programming Menu Structure for a locked, SAFE Select, BNF Rx
(E-Flite Eratix BNF with a locked AR630 on AS3X+ Firmware v3.01.03 (July 18 ,2024))**

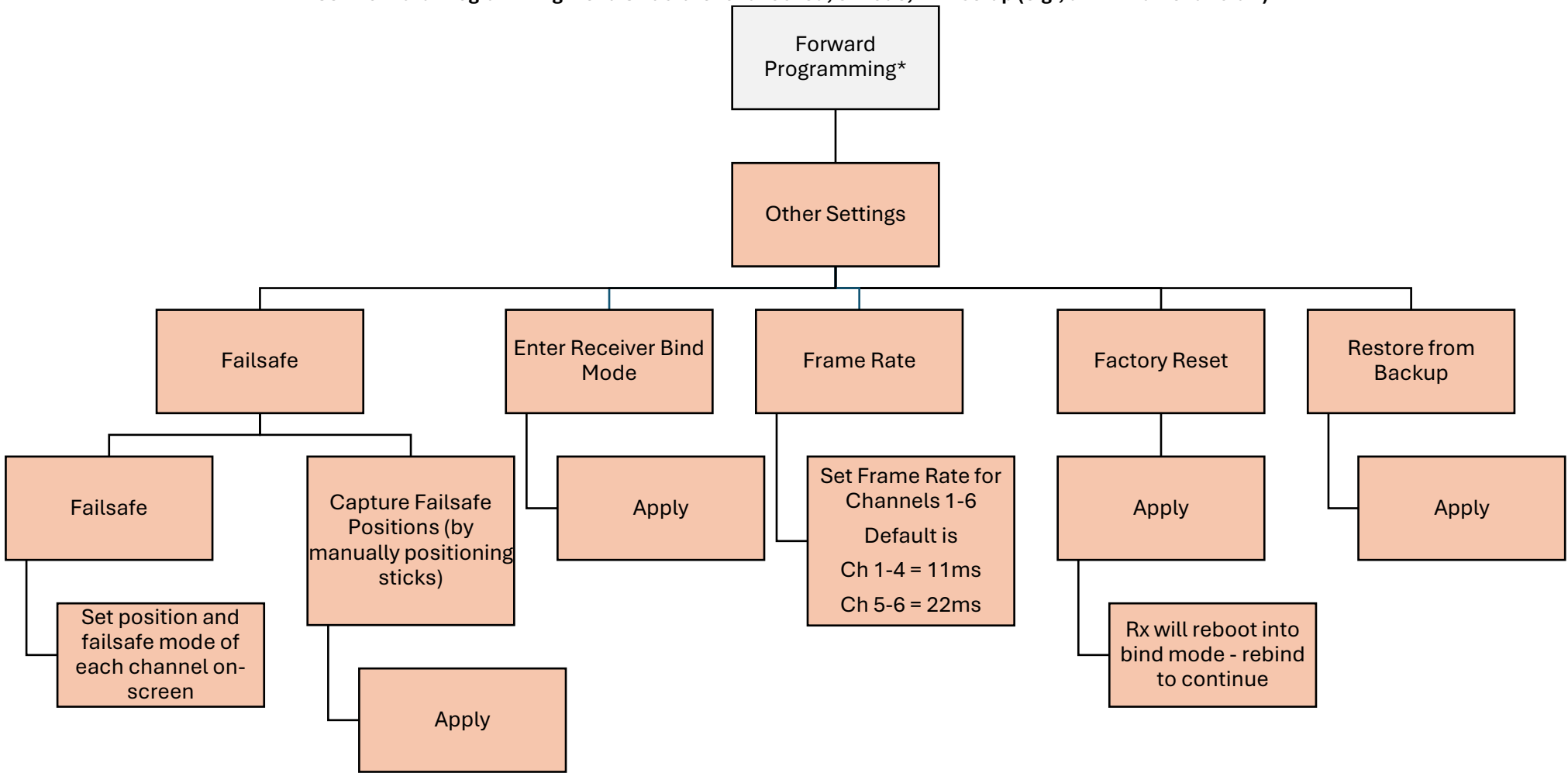


***On the Forward Programming screen:**



Submenu items in boxes this color only appear if “Show Advanced Menus” is Active. If “Show Advanced Menus” is Inhibited only the gray items appear.

AS3X Forward Programming Menu Structure for a locked, 3-Mode, BNF setup (e.g., a BNF trainer aircraft)



***On the Forward Programming screen:**



*Submenu items in boxes this color only appear if "Show Advanced Menus" is **Active**. If "Show Advanced Menus" is **Inhibited** there are no Forward Programming options*