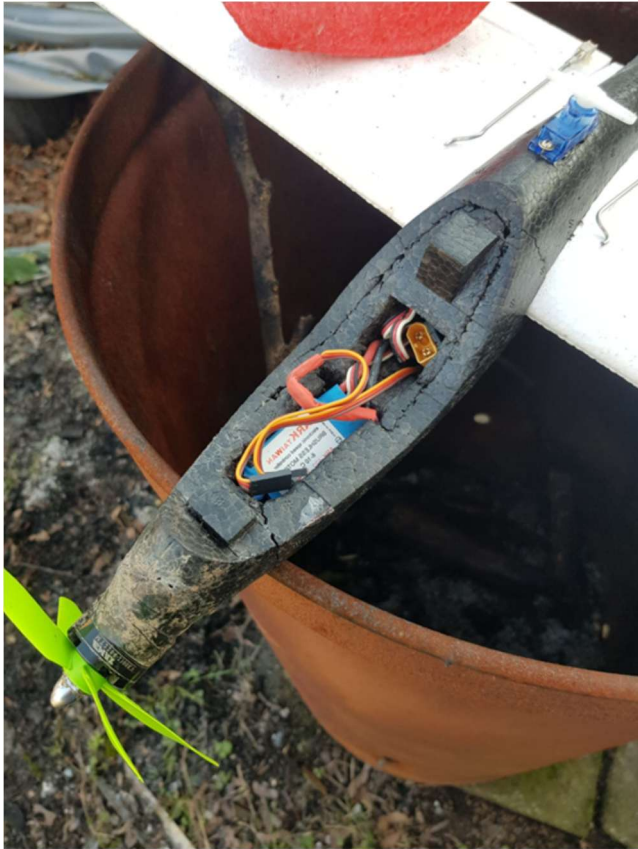




Marston Green
Model Flying Club

www.mgmfc-bmfa-club



Wing with small amount of dihedral left in, carbon tube pushed into centre of rear fuselage for strength.
9g servo on aileron set into top of fuselage & elevator servo close to tail
Elevator is cut as a single piece and hinged along the length – relieved rudder base for deflection clearance
Motor is a EMAX 2204 – 2300kv mounted to ply plate cut with down and right built in, Prop is a 4 blade drone version. 30A esc
XT60 battery connectors for 900mah 3s
Fuse hollowed out a small amount for equipment bay.

Flying Notes :

Easy to hand launch, plenty of power and at least 10min flying time. good slow speed handling due to inboard ailerons in the prop wash. Battle scars show durability and ease of repair.